



## WATTON JUNIOR SCHOOL

**SMILE:** We aspire to unlock the full potential of every pupil by Stimulating, Motivating, Inspiring Learning and Enjoyment in a safe environment

### Welcome to Watton Junior School

We are a friendly Junior school in Watton, in the heart of Norfolk. Our inspiring and challenging curriculum is based on core stories which lead to engaging learning experiences for the children which help them to fulfil their potential, no matter what their ability.

Our school is part of Corvus Education Trust, a multi-academy trust which includes our partner schools Watton Westfield Infant Nursery School, Manor Field Infant and Nursery School and Aslacton Primary School. Our Trust Lead/CEO Jim Adams, oversees all four schools, each of which has a unique character and feel. More information about the trust can be found on the Corvus Education Trust website.

We believe that children achieve their best when they are relaxed, confident and enjoying themselves. With that aim, our highly-trained and dedicated staff get to know the unique talents and characteristics of each child so that we can tailor the curriculum to their needs.

The safety, happiness and achievement of the children is paramount. Every child has a voice - Children's Voice groups, School Council and Eco Council ensure that the children feel valued and listened to.

We work alongside our families and community to provide the best possible outcomes for our children.

We are very proud of our school and our children and I look forward to welcoming you.

**Helen Kemp**  
Executive Head Teacher



OUR SCHOOL-MAIN ENTRANCE



### Our School

Watton Junior School is a traditional building. In addition to the three main blocks it has three modern modular classrooms.

The school has a large dining room and a main hall for indoor activities.

There are extensive grounds which provide plenty of opportunity for outdoor learning and a very large playing field for sports.

**'All of the teachers are very enthusiastic'**

**- Year 5 pupil**



**OUR LIBRARY**

### Our Community

Working with the local and wider community is of high importance to us at Watton Junior School and this is embedded within our overarching ethos of care. The children are encouraged to raise monies for charitable causes both at home and around the world.

We offer Breakfast Club from Monday to Friday, as part of our Extended School Services.

The children also benefit from our close links with our cluster, taking part in a variety of sports events.

## Aims and Values

The principal aims of the school and the trust are to lay the foundations for the future intellectual, physical, social, moral and cultural development of each child. We aim to achieve the highest possible standards in relation to the pupil's age and ability by providing teaching of a high quality and a rich curriculum that meets national requirements. Through efficient management at all levels we aim to make best use of our available resources by:

- Providing all pupils with a stimulating, secure environment where children want to learn and where they achieve their full potential.
- Creating a caring atmosphere, where pupils respect the values, beliefs, aspirations and property of all members of the school and wider community, building on the foundations laid down at home and Infant school.
- Promoting a desire in the children to bring credit on themselves and their school by their good behaviour in and out of school, reinforced by a firm and fair Behaviour Policy.
- Recognising the needs of each individual child and celebrate their efforts and successes in order to build self-worth.
- Ensuring strong links with the local communities, recognising the school's place as a valuable resource.
- Involving parents and carers in their child's learning, as we believe that education is a partnership between home and school.

### Inspiring Learning

We make the most of our fantastic school grounds and forest schools areas by taking our learning outdoors when we can.

The arts, music and sports remain extremely popular; we hold Maths Weeks, Science events & outdoor learning week.



**OUTDOOR GYM EQUIPMENT**

## Engaging extra-curricular activities

Children at Watton Junior School have the opportunity to take part in a range of extra-curricular clubs and activities.

As part of our creative and challenging curriculum, we organise many visitors during the course of the year. The children also have the opportunity to take part in trips during the academic year and in Year 6 our pupils have the opportunity to go on a residential trip.



## BLOCKS 1 AND 2

## Home and School in Partnership

We welcome voluntary help from parents with cooking, artwork, the library and reading. We also welcome parents to help us with our educational resources, school clubs and educational visits.

All parents receive termly information about what learning will be covered in each class, and how they can help support the curriculum at home. In the first years of school the homework is mostly reading based, with some suggestions of fun and practical activities to do with your child. As the children progress through the school, the expectation is that children will complete homework, appropriate for their age and stage of development, to support their learning at home and help prepare them for High School.

We have an active PTA committee, where both parents and teachers can work closely to arrange social functions, educational evenings and fund-raising activities. They make considerable donations to the school every year for the purchase of a variety of resources.

Parents can also contribute to the life of the school by becoming part of our local governing body, a group of people who support the school and are responsible, along with our Trustees, for directing the conduct of the school and promoting high standards of education for our children.

Working in partnership allows the full potential of all our children to be reached and celebrated.

## Including Everyone

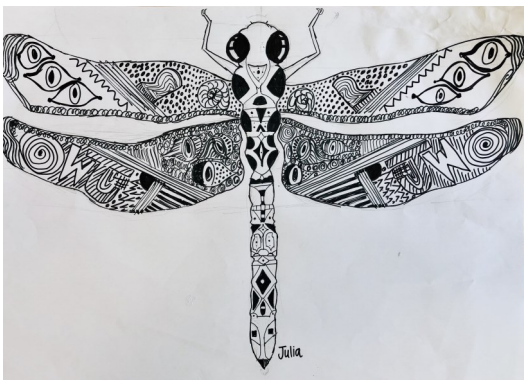
The needs of children with English as an additional language, physical impairment or medical needs are carefully considered. Support is provided appropriately to assist each child's needs. Watton Junior School is an inclusive school. We accept children with EHCPs in accordance with the SEND Code of Practice.

It is our belief that all pupils of this school have a right of access to opportunities regardless of ability, age, gender, physical ability, capability or characteristics, racial or ethnic group, religious beliefs and social background. We also believe that all pupils should be encouraged to understand the implications of equal opportunity and regard and should be challenged to dispel the ignorance and distrust which breeds prejudice and discrimination.



## SCHOOL DISPLAYS





## ENCOURAGING THE ARTS

## Challenging Curriculum

At Watton Junior School we employ teaching methodology and classroom organisation which recognise the needs of all our children. We provide access to new learning through planned activities, self initiated activities, practical resources and effective use of both indoor and outdoor space. Teachers build on the child's experiences to ensure that they feel happy, valued and secure.

Learning to read and enjoy high quality text remains a key priority throughout the school. We aim for all pupils to be able to read well as soon as possible. Children are taught the National Curriculum subjects of English, mathematics and science alongside the foundation subjects of art, design and technology, ICT, history, geography, religious education, music, MFL, physical education and personal, social, health and citizenship. We place an emphasis on the Social, Moral, Spiritual and Emotional education of our children, and follow the PATHS (promoting alternative thinking strategies,) scheme of work closely.

We have a strong will to be at the forefront of ICT and pupils are given many opportunities to use a range of equipment to support their learning. We have a school Learning Platform, DB Primary, which children can log into at home and at school to take part in activities which support their learning. In order to make learning exciting and stimulating, we have developed a challenging, creative curriculum that makes links between subjects and encourages cross-curricular learning. We base all of our work for each half term around a core story, which acts as a stimulus and inspiration for all of our work.

## Assessment

Assessment is carried out across the school with national testing in Year 4 and Year 6. Homework is provided for all children and increases as they progress through the school.

Termly learning conversations and bi-annual progress reports help you understand how your child is progressing.



**'Everybody is respectful and kind'**  
-Year 6 pupil

## MAKING SHELTERS IN TECHNOLOGY

## Helpful Information

At Watton Junior school, we pride ourselves on ensuring parents have all the information they need during their child's time at the school.

Below, you will find basic information. More detailed information regarding school guidelines, policies and procedures is available on the school website.

We welcome parents to contact us on **01953 881387**.



**OUR PLAYGROUND**

## Our School Day and Session Times

|                  |                   |
|------------------|-------------------|
| 8.50 a.m.        | School day starts |
| 8.50 - 9.00      | Registration      |
| 9.00 - 10.30     | Session 1         |
| 10.30 - 10.45am. | Morning Break     |
| 10.45 - 12.00    | Session 2         |
| 12.00 - 1.00pm.  | Lunch Break       |
| 1.00 - 3.15      | Session 3         |
| 3.15pm.          | End of school day |

## Pupil Support

We have a strong Pupil Support Team lead by a Trust SENDCo. We are an inclusive school and do our utmost to support Individual pupils with additional needs in a mainstream school where appropriate.

**'I like art because you can let your imagination run wild!'**

**-Year 5 pupil**



**ENCOURAGING A LOVE OF READING**

## Attendance

Our aim is for 100% attendance. We give certificates for good attendance at the end of each school year. Holidays in term time will not be authorised.

# School Uniform

The school encourages all children to wear school uniform as it:

- Gives the children a feeling of belonging to the school.
- It's practical for all weather conditions and comfortable.
- It's good value for money and means children are not asking for expensive labelled sweatshirts, etc.

## The uniform consists of:

Navy blue school sweatshirt or cardigan

Blue or white polo shirt

Grey or black skirt, pinafore or trousers

Blue gingham summer dresses may be worn in the summer

Sensible black shoes suitable for school activities.

## PE Kit consists of:

Navy or black shorts

Navy or black tracksuit trousers

Plain T-shirt and sweatshirt in your child's house colour

Trainers to be worn outdoors for games

Our school uniform supplier is Birds of Dereham please follow the link below :  
[www.birdsofdereham.com](http://www.birdsofdereham.com)



## Safeguarding

Watton Junior School is committed to safeguarding and promoting the welfare of all of our children. We require all staff to undergo annual safeguarding training, and all visitors to the school read and understand our policies and procedures. All staff and volunteers who work with our children are required to have an up to date DBS check in place.

As part of our Stay Safe Days each year, all pupils are taught about road safety, fire safety, and Sun safety people who help us and online safety.



## Contact Us:

### Watton Junior School

Brandon Road

Watton,

Norfolk,

IP25 6AL

Tel: 01953 881387

### Email us at:

[office.wjs@corvuseducation.com](mailto:office.wjs@corvuseducation.com)

### Or visit our school website:

<https://corvuseducation.com/wattonjunior>

