



Watton Junior School - Newsletter Friday 12th September 2022

***This half term our Corvus Core Value is:  
to develop communication skills effectively***



We are deeply saddened to hear of the passing of Her Majesty Queen Elizabeth II and our sympathies are with her family at this time. We are thankful for her life of service to our country and beyond. May she rest in peace.

It is our understanding that schools will close for the day of Her Majesty's funeral only. We will share this information once it has been confirmed.

Any families wishing to leave a tribute to Her Majesty are able to sign an online book of condolence at <https://www.royal.uk/books-condolence>

We also show our support to His Majesty King Charles III as he ascends to the throne. Long Live the King.

**SMILE:** We aspire to unlock the full potential of every pupil by  
Stimulating, Motivating, Inspiring Learning and Enjoyment  
in a safe environment

## Watton Junior School - Newsletter Friday 12th September 2022



Welcome to the start of the 2022-23 academic year! We are so pleased to meet all our new families and see those returning after the summer break. We are looking forward to a fantastic year where we all enjoy learning together and being the best we can be! As a school we are always looking to improve and develop. This year our focus is on:

**Attendance:** To improve attendance so that children have a better chance of catching up on missed learning.

**SEND:** To raise standards in progress and attainment for pupils with additional needs.

**Closing Gaps after Covid 19:** To transition pupils into their new year groups as sympathetically as possible. To provide a safe environment for both pupils and staff. To gain ground on the missed learning from the previous years.

**SEMH Needs & Wellbeing:** To enable children to have new experiences in the safety of the school site and to be able to vocalise their feelings.

**Focus on Writing:** To improve standards in writing.

### Staffing News

Welcome to Mrs Whiffin who is teaching Mandela, Mr Smith who is teaching in Austen class and Miss Leach our new TA.

### Pupil Premium and Cost of Living Vouchers

**If you are in receipt of Universal Credit** (with an annual earned income of no more than £7,400 after tax), Income Support, Income based Job Seeker's Allowance, Income Related ESA, Support under Part 6 of the Immigration and Asylum Act 1999, The guaranteed element of Pension Credit, Working Tax Credit run-on (paid for the four weeks after you stop qualifying for Working Tax Credit), or Child Tax Credit (with no Working Tax Credit) with an annual gross income of no more than £16,190 **your child may also be eligible for Pupil Premium Support which generates extra funding to help support them in school and you may qualify for cost of living food vouchers of £15 per month in addition to Free School Meals. Apply at <https://www.norfolk.gov.uk/education-and-learning/schools/school-meals-and-milk>**



### Diary Dates:

*Tuesday 20th September 2pm—PTA (Friends of Watton Westfield & Watton Junior Schools) Annual General Meeting at Watton Westfield in the hall*

*Monday 24th October—Friday 28th October Half Term*

*Friday 16th December—Last day of term before break for Christmas Holiday*

*Wednesday 4th January—School reopens for Spring term 2023*

*Monday 13th February—Friday 17th February - Half term*

*Friday 31st March—Last day of term before break for Easter Holiday*

*Tuesday 18th April—School reopens for Summer term 2023*

*Monday 29th May—Friday 2nd June Summer half term*

*Friday 21st July—Last day of the academic year.*



**We will normally send out our weekly newsletter electronically by email and post it to our website, Class Dojo and FaceBook page. Paper copies will only be sent to those who have requested them so we can be more eco-friendly and reduce the use of resources.**

**SMILE:** We aspire to unlock the full potential of every pupil by Stimulating, Motivating, Inspiring Learning and Enjoyment in a safe environment

## School Lunches

Our school meals are cooked on site by Edwards and Blake. The menu is available on our school website.

If you choose to send your child with a packed lunch from home please can we remind you we are a nut free school. This is to keep children and staff with allergies safe. Please do not send in any nuts or nut products such as peanut butter or Nutella. Thank you.

Watton Junior School is a cashless site so please pay for any lunches on our Parent App.



## School Uniform

We ask children to dress as follows:

A white or blue polo shirt or blouse

A navy blue school sweatshirt or cardigan

Grey or black trousers, skirt or pinafore dress

A blue gingham school dress for girls may be worn in the summer

Grey or black tailored school shorts for boys may be worn in the summer

Sensible school footwear that can be easily self-managed and worn to run and play safely.

No open toed footwear

Socks or tights must be worn; preferably white, black or grey

Every child should have a royal blue book bag

For P.E. children will be expected to wear black P.E. shorts or jogging bottoms and a t-shirt or sweatshirt in their house colour:

Epsilon – Yellow

Gamma – Green

Delta – Red

Beta – Blue

Uniform and PE kits with our school logo are available from our approved supplier Birds of Dereham, either in their store on Yaxham Road in Dereham, or online at <https://www.birdsofdereham.com/>. **You may also purchase from any supplier without the logo as long as you keep to the correct colours.**

Name labels can be ordered from <https://www.mynametags.com/affiliate?id=28233>. The PTA earns commission on all sales through this link. Thank you.

## How Corvus got its Name

Corvus is a constellation of four stars: Beta, Delta, Gamma & Epsilon, which our House teams are named after. The word Corvus means 'Raven' in Latin, and in mythology the ravens brought knowledge to the Norse god Odin.



### House Colours

Beta = Blue

Delta = Red

Gamma = Green

Epsilon = Yellow



Email us at:

[office@westfield.norfolk.sch.uk](mailto:office@westfield.norfolk.sch.uk)

Visit our Website:

<http://watton.corvuseducation.com>

Telephone:

01953 882669

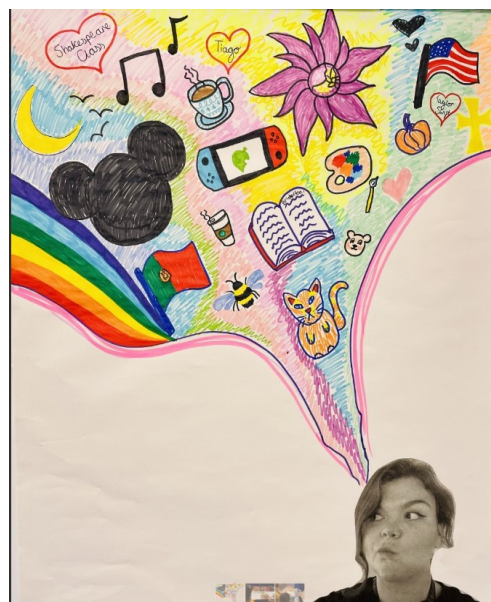
Follow us on FaceBook @ <https://www.facebook.com/wattonwestfieldinfantandnurseryschool/>

## Year 3 & 4

Year 3 and 4 are using the Core Stories 'Kai and the Monkey King' and another after that. I don't really want to name it yet as that is part of the learning at the beginning. (The Tin Forest) This week, we have been learning history related to the famous person that each class is named after. For example, Peake Class have been watching, learning about and participating in astronaut training exercised for today's PE, which comes from Mission X. This is a space themed programme with links to health, fitness, nutrition and mental abilities that astronauts require. I'll let others add anything about their week!



## Year 5 & 6



In UKS2 we have really enjoyed being back to school. We hit the ground running with a fabulous core story, Kai and the Monkey King. We still don't know how the story will unfold but we are excited to find out. This week in English we have been looking at correcting our sentences, making sure they contain a verb and a noun, remembering that they need a capital letter and full stop. Mr Beeson got us to use subordinating conjunctions! In maths we were looking at place value and having fun with the concrete resources to show us what the numbers look like, and which position they are placed. Miss Grealey showed us how to use times table rock stars and we are excited to improve our times table fact knowledge throughout the year. Our focus this week has been 'This is me'. We are celebrating that we are all different, that we have different interests and facts about ourselves. We have made a piece of artwork which will create a collaborative piece of work in the Old Hall. Miss Taylor made a piece of art in this style too (see the picture). On this theme we have enjoyed 'This is me' from The Greatest Showman, some of us have had a go at the sign language for this song and Nightingale class had Mr Starling play it on the guitar...proving he has 'rock star' status! Finally, in PE we have started our 6 weeks fitness and outdoor adventurous activities lessons.



## Supervision of Children before and after School

Parents and carers are responsible for supervising their children and keeping them with you while on site at the start and end of the school day. Please do not allow them to run off from you and do not allow them to climb on the bike shelters and sports equipment. Thank you.



# Watton Junior School - Newsletter Friday 12th September 2022

## PTA Annual General Meeting—Friends of Watton Westfield and Watton Junior Schools

We would like to invite all parents and carers from both Watton Westfield and Watton Junior Schools to come along to our first PTA meeting this year on **Tuesday 20th September at 2pm at the Watton Westfield site**. Grandparents and childminders etc are also very welcome to come along. Please sign in at the Westfield Office when you arrive.

We have a really enthusiastic staff team who are keen to be able to offer events for the children but we cannot do this without parents who can help us by sharing ideas, helping man stalls, wrapping Christmas presents, selling tickets, making and putting up decorations, serving refreshments etc. We also need a few key players who are happy to be a voice of the parents, help with the organisation, record keeping and banking etc to serve as committee officers. The committee officers will need to have a DBS check and references, but we will arrange this for you at no cost to yourselves.

Everything the PTA does is for the benefit of the children. They raise money to provide opportunities, events and resources which cannot be covered from the school budget and the children would miss out on otherwise. Coming up we have a very exciting Christmas to plan! We need lots of 'elves' to help.

Please come along and see how you can be involved. No offer of help is too big or too small! We can't wait to meet you.

### **Annual General Meeting Agenda**

- 1) Welcome and Introductions
- 2) Chairperson's Report – summary of events and activities in 2021/22, successes and challenges
- 3) Treasurer's Report – finalisation of 2021/22 accounts, summary of income and expenditure, balance at start of 2022/23
- 4) Bank Account Update – account name and signatories to be agreed and actioned. Deadline to be agreed
- 5) Election of Committee for 2022/23 – Chair Person, Vice Chair, Treasurer, Secretary
- 6) Agreement of PTA insurance and membership of ParentKind for 2022/23
- 7) Update of Charity Commission website
- 8) Plans Going Forward
- 9) School Wish List
- 10) Time and Date of Next Meeting



## Breakfast and After School Club

We are pleased to inform you that our Breakfast and After School Club bookings have gone live on the new online Magic Booking website. This replaces all the old booking forms and manual invoicing so is much more efficient for everyone! Parents and carers have control of making and cancelling their own bookings. Places are limited and subject to availability, first come, first served.

If you plan to use Breakfast or After School Club, please register as soon as possible as you won't be able to make a booking without an account and your child could miss out on activities as a result.

To create your account go to <https://wattonwestfield.magicbooking.co.uk/>

Click the button 'Create an account', you can use the Help? section on the top right hand-side of the Magic Booking website and follow the process described in the relevant sections. It takes 5 to 10 minutes to create your account.

Email us at:

[office@westfield.norfolk.sch.uk](mailto:office@westfield.norfolk.sch.uk)

Visit our Website:

<http://watton.corvuseducation.com>

Telephone:

01953 882669

Follow us on FaceBook @ <https://www.facebook.com/wattonwestfieldinfantandnurseryschool/>

# Watton Junior School - Newsletter Friday 12th September 2022

## Attendance at school and legal intervention

Research commissioned by the Department for Education shows missing school for even a day can mean a child is less likely to achieve good grades, which can have a damaging effect on their life chances. At Watton Westfield Infant and Nursery School our aim is to work with parents to ensure that all our pupils receive the most from their education and reach their full potential. This letter is to remind all parents/carers regarding the law that requires them to ensure that their child attends school regularly. The Government remains very clear that no child should miss school apart from in exceptional circumstances and schools must continue to take steps to reduce absence to support children's attainment.

In the DfE policy document entitled, 'School Attendance: Guidance for maintained schools, academies, independent schools and local authorities' it states, 'Head teachers should not grant leave of absence unless there are exceptional circumstances. The application must be made in advance and the head teacher must be satisfied that there are exceptional circumstances based on the individual facts and circumstances of the case which warrant the leave. Where a leave of absence is granted, the head teacher will determine the number of days a pupil can be away from school. A leave of absence is granted entirely at the head teacher's discretion'. If the school does not receive a request for leave, the head teacher will be unable to consider your individual circumstances and the absence will be recorded as unauthorised. There will be no obligation on the head teacher to reconsider authorising the leave if an application has not been made in advance.

The Local Authority operates a system where any pupil will meet the criteria for legal intervention where they have:

- at least 9 sessions (4.5 school days) lost to unauthorised absence by the pupil during the last 6 school weeks

The intervention could be in the form of a fixed penalty notice.

Any pupil at Watton Westfield Infant and Nursery School who meets the criteria, will be referred to the Local Authority for action to be considered. If a fixed penalty notice is issued the arrangement for the payment will be detailed on the penalty notice. The penalty is £60 if paid within 21 days of receipt of the notice, rising to £120 if paid after 21 days but within 28 days of the receipt of the notice. The fixed penalty notice is per parent per child. You should be aware that failure to pay the total amount within the timescale will result in legal action being taken.

I hope we can count on your support in this matter, please do not hesitate to contact us if you have any questions.

## Road Safety, Parking and Unofficial One Way System

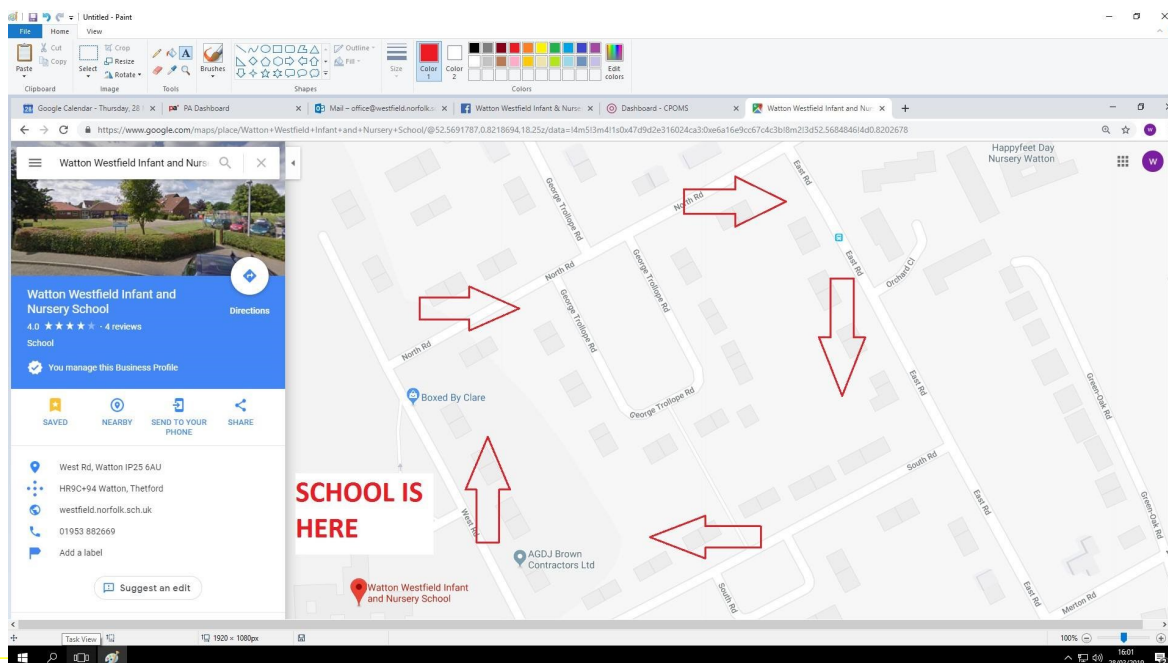
When bringing or collecting your child from school please walk wherever possible. If you have no option other than to drive please park safely, legally and with consideration to pedestrians, other road users and local residents, taking care not to cause obstructions. Please park away from the school where possible and consider walking the last few minutes of your journey. There is free parking available at the vet's carpark, behind the Factory Shop, on Thetford Road Memorial car park, at Tesco and behind the Queen's Hall.

Please can we remind all drivers still needing to park nearby of the unofficial one way system on the residential streets around the school to help ease congestion and keep the roads safer for children on their way to and from school.

If arriving from George Trollope Rd., please turn LEFT onto North Rd., RIGHT onto EAST Rd., RIGHT onto South Rd., and RIGHT onto West Rd. keeping the school to your LEFT.

If arriving from Merton Rd., please turn onto East Rd., LEFT onto South Rd., and RIGHT onto West Rd., keeping the school to your LEFT.

.Thank you for your support and co-operation. The safety of the children is our priority.



Email us at:  
office@westfield.norfolk.sch.uk

Visit our Website:  
<http://watton.corvuseducation.com>

Telephone:  
01953 882669

Follow us on FaceBook @ <https://www.facebook.com/wattonwestfieldinfantandnurseryschool/>