

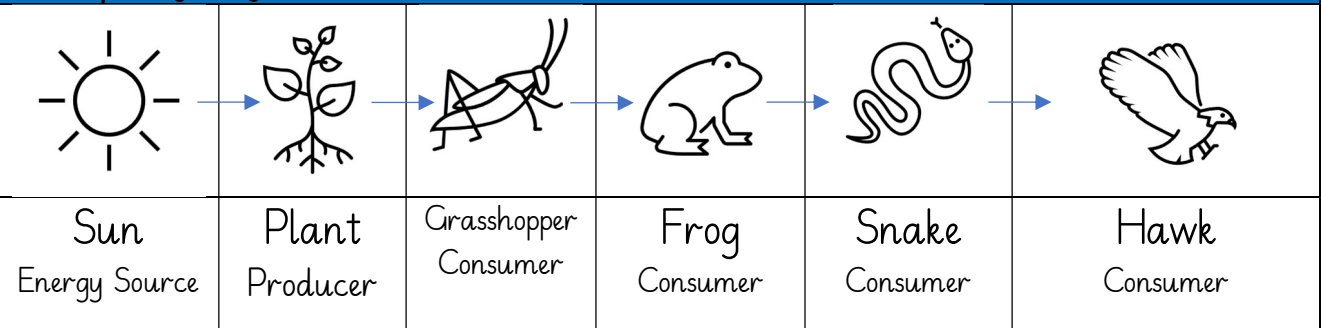
Subject	Topic	Year	Term
Science	Animals incl. Humans	4	Summer 2

N.C. Statements **What are omnivores, herbivores, and carnivores?**

- Digestive system**
- What is the digestive system and the body part used in the digestive system,
 - The six stages of the digestive system.
 - Function of the body parts used in the digestive system.
- Teeth**
- Types of human teeth and their functions.
 - Differences and similarities between humans and animal's teeth.
 - What is tooth decay and what causes tooth decay?
- Food chains**
- How food chains work and why we have them.
 - Know what producers, predators and prey are.

Herbivores eat plants, carnivores eat meat (other animals, and omnivores eat plants and meat (other animals).

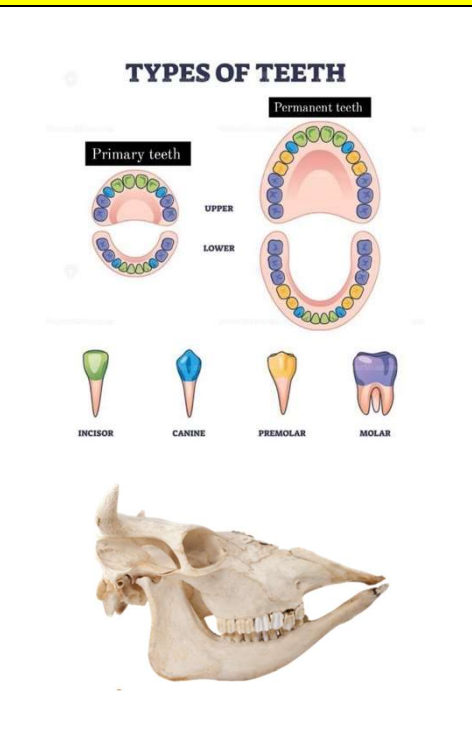
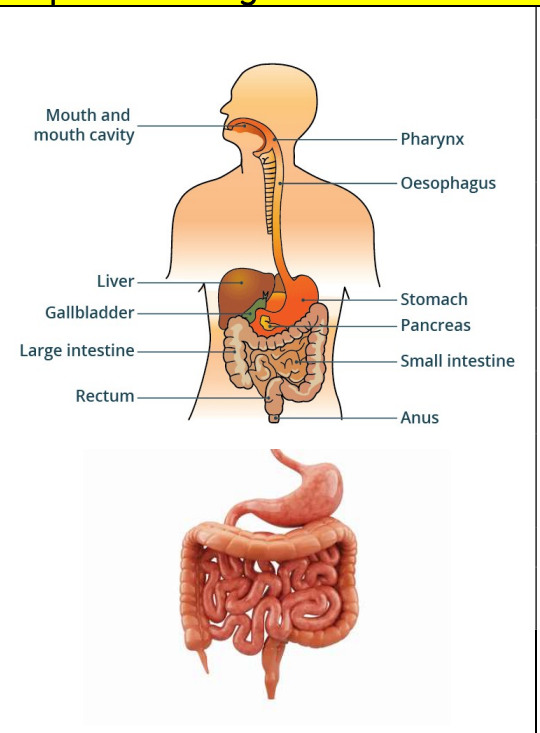
Example of a food chain



Key Vocabulary **Key Questions to ask** **Important Diagrams and Pictures**

The Spellings	The Definitions
digest	Break down food to use by the body.
stomach	Where food is broken down with stomach acid
teeth	Bite, tear, crush grind food
sml intestine	Where nutrients are absorbed into the body.
lrg intestine	Where faeces are formed
rectum	Where faeces are stored before leaving the body through the anus.
producer	Produces its own food
predator	Hunts & eats other animals.
prey	Hunted & eaten by another animals

How does food move through the digestive system?
 What are the different parts of the digestive system called?
 How many teeth does a human have?
 What do the arrows mean in a food chain?



Common Misconceptions

- Digestion starts in the stomach.
- Digestion ends in the large intestine.
- You cannot swallow food when you're upside down.
- The harder you brush your teeth, the cleaner they will be.
- Organisms higher in the food chain will eat everything below them.
- Plants are dependent on humans, not vice versa.